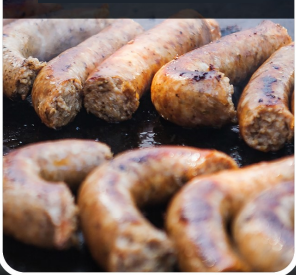


Processes up to
150 kg meat/hour
700 W rated power
(max 2.100 W)

FOR THE PRODUCTION
OF MINCED MEAT



FOR THE PRODUCTION
OF SAUSAGES



FOR THE PRODUCTION
OF KEBBE



FOR THE PRODUCTION
OF SHORTBREAD
BISCUITS



AND MUCH
MORE



DESIGN MINCER 6-IN-1 PLUS #6

INCLUDING EXTENSIVE ACCESSORIES:



3mm
Perforated
disc



5mm
Perforated
disc



7mm
Perforated
disc



Kebbe
attachment



shortbread
attachment



Sausage
filling
attachment



stuffer



Burger press—2 sizes
for filled patties

VERSATILE, ROBUST, DURABLE,
RELIABLE, POWERFUL, FLEXIBLE

GASTROBACK®

DESIGN MINCER
6-IN-1 PLUS #6

POWERFUL AND ROBUST
ALTERNATING CURRENT MOTOR WITH
PARALLEL SHAFT GEARBOX
AND ALL-METAL GEARS

INTEGRATED
STORAGE BOX
FOR ACCESSORIES



INCLUDING BURGER
PRESS

2 SPEED LEVELS
AND REVERSE
FOR OPTIMUM RESULTS

FOR THE
PRODUCTION OF
BURGER PATTIES



BURGER RECIPE AND VIDEO



Description:

- **Versatility:** 6-in-1 for making minced meat, sausages, burger patties, kebbe, 4 types of shortbread, chopping herbs, vegetables and fish. Variable speed control (2 speeds and reverse) for optimum results.
- **Powerful motor:** Powerful and robust AC motor with 700 W rated power and max. lock power of 2.100 W ensures fast, efficient and reliable work every day.
- **High Performance & Flexibility:** Processes up to 150 kg of meat in one hour (2,5 kg per minute). Two speeds plus reverse function for a wide range of processing options. Always delivers reliable performance in daily use.
- **Robust Design & maximum reliability:** High-quality, stainless steel housing, specially ground 4-blade stainless steel cross blade, metal holder and parallel shaft gearbox with full metal gears ensure durability, smooth function and stability.
- **User-friendly:** Intuitive operation (button control), integrated carrying handle and storage space.
- **Accessories:** 3 stainless steel perforated discs: 3 mm, 5 mm and 7 mm (disc diameter approx. 6 cm), sausage filling and kebbe attachment as well as shortbread attachment with 4 motifs, burger press (2 sizes) and 2-piece storage set for accessories. The lid also serves as a drip tray for minced meat.

Technical data:

Art.-No:	41407	Dimensions:	184 x 366 x 317 mm (B x T x H)	
EAN-No.:	4016432414076	Performance:	max. 2.100 Watt, 220-240V, 50-60 Hz	
PU:	2	Weight:	ca. 5,4 kg	